



Solutions Inc.

Formerly Dzus Fastener Co.Inc.

DP-6100 Line



DFCI DP-6100 Latches offer quarter turn operation, with locking, under tension, over a wide range of material thicknesses. Most of the **DP-6100 Latches** are fully adjustable and are useful for gasketed equipment doors or any access location subject to wide thickness or misalignment tolerances.

DP-6100 Line



Solutions Inc.
Formerly Dzuz Fastener Co. Inc.

DP170



DP170 is a smaller version of the DP175. It consists of a helical spring pawl which varies its grip length with rotation and is capable of latching a wide range of support thicknesses. The sloped pawl design also allows the operator to adjust the applied clamping force.

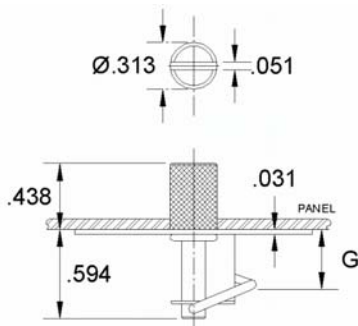
Material

Latch Heads: As listed

Latch Body: Steel, zinc plate, yellow chromate

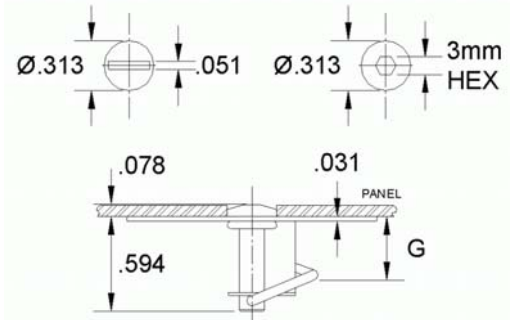
Spring Pawl: Zinc plated

Knurled Head (K)



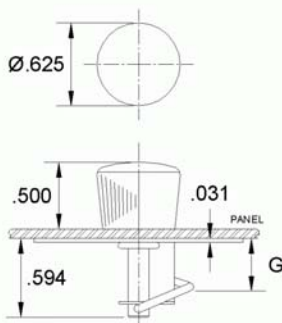
Part Number	Grip Range G	Head Finish
DP170KY	.039" to .250"	Zinc plate with yellow chromate

Pan Head



Part Number	Grip Range G	Head	Head Finish (all with chromate surface)
DP170AY	.039" to .250"	Slot	Zinc plate with yellow chromate
DP170AB		Slot	Zinc plate with Black Chromate
DP170HY		Hex	Zinc plate with yellow chromate

Plastic Knob Head (P)

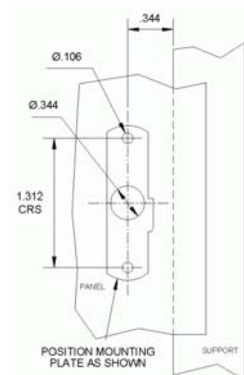


Max. panel with knob: .177"

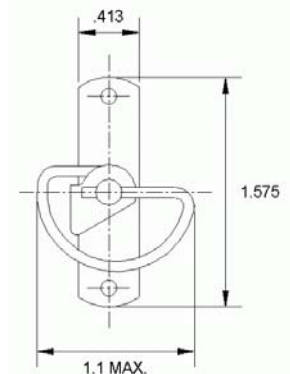
Knob is supplied unattached and is pressed onto head after installing latch.

Part Number	Grip Range G	Head Finish
DP170P	.039" to .250"	Black Thermoplastic

Installation Procedure Max. Load Without Distortion: 9 lb.



Panel Preparation



Under-Panel Dimensions



Solutions Inc.

Formerly Dzus Fastener Co.Inc.

DP-6100 Line

DP175

DP175 is a larger version of the DP170. It consists of a helical spring pawl which varies its grip length with rotation and is capable of latching a wide range of support thicknesses. The sloped pawl design also allows the operator to adjust the applied clamping force.

Material

Latch Heads: As listed

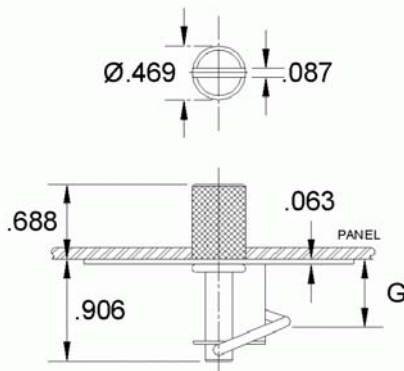
Latch Body: Steel, zinc plate, yellow chromate

Spring Pawl: Zinc plated

Note: Part Number DP175KS: All 300 series stainless steel construction

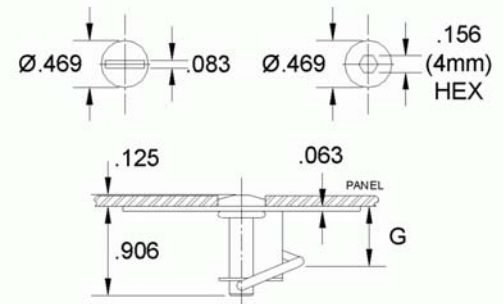


Knurled Head (K)



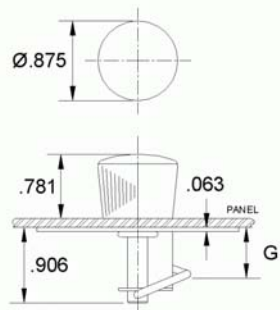
Part Number	Grip Range G	Head Finish
DP175KY	.078" to .438:	Zinc plate with yellow chromate
DP175KS		Stainless steel 300 series

Pan Head



Part Number	Grip Range G	Head	Head Finish (all with chromate surface)
DP175AY	.078" to .438"	Slot	Zinc plate with yellow chromate
DP175AB		Slot	Zinc plate with Black Chromate
DP175HY		Hex	Zinc plate with yellow chromate

Plastic Knob Head (P)

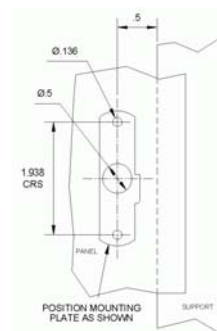


Max. panel with knob: .250"

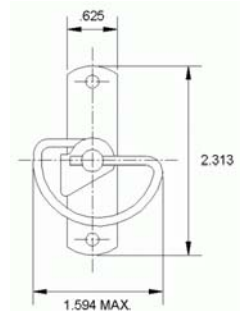
Knob is supplied unattached and is pressed onto head after installing latch.

Part Number	Grip Range G	Head Finish
DP175P	.078" to .438"	Black Thermoplastic

Installation Procedure
Max. Load Without Distortion: 23 lb.



Panel Preparation



Under-Panel Dimensions

DP-6100 Line



Solutions Inc.
Formerly Dzus Fastener Co. Inc.

DP137



This fastener assembly provides basic quarter turn operation at low installed cost. The plastic studs are combined with a spring steel pawl. The pawl is rapidly installed by pushing on to the shaft of the stud. One-way tabs on the pawl maintain its position and provide secure stud retention during operation.

Material:

Stud: Black acetal copolymer. Material burning rating code UL94HP. ASTM E0162.

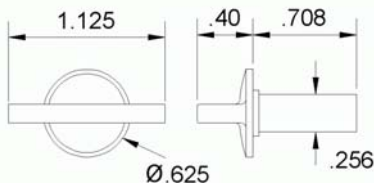
F.S.I. = 130 -40°F (-40°C) to +194°F (+90°C) +248°F (120°C) short periods.

Pawl: Stainless steel spring temper.

Wing Head



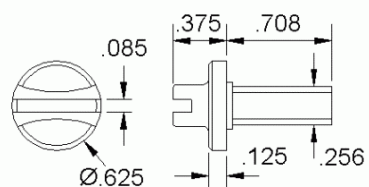
Part Number DP137-1W



Slotted Knob Head



Part Number DP137-1M



Fastener Selection and Installation

1. Choose head style with part number
2. Select the correct pawl based upon your D Dimension

Dim D

Use Pawl Part Number

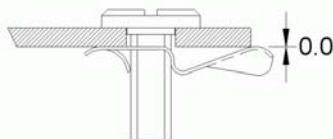
.010" to .090"

DP137-2S

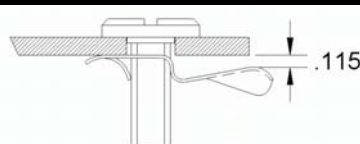
.125" to .205"

DP137-2L

DP137-2S

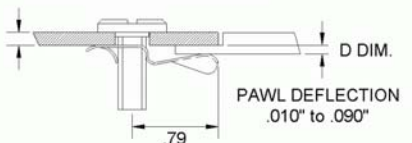


DP137-2L



DP137-2S and DP137-2L

PANEL THICKNESS: .04" to .41"



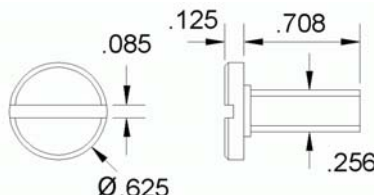
Ø.315" INSTALLATION HOLE



Slotted Head



Part Number DP137-1S



Pawl



Part Number
DP137-2S



Part Number
DP137-2L

